



THE MOUTH OF THE HAW

THE NEWSLETTER OF THE HAW RIVER TRAIL PARTNERSHIP

Fall 2008

www.thehaw.org

What is the Haw River Trail Partnership?

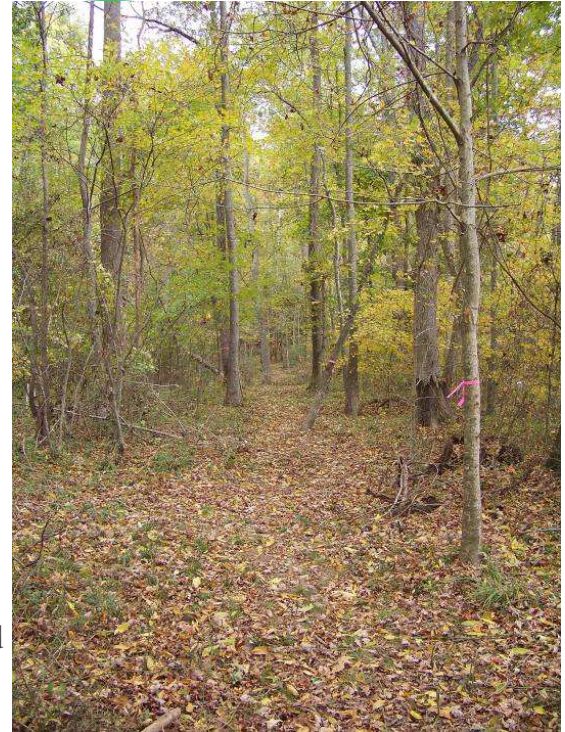
In 2006, 10 governmental agencies signed a Memorandum of Understanding agreeing to work together for the development of the Haw River Trail and the conservation of its land and waters.

In this spirit, the cities of Burlington and Graham have partnered with Alamance County, the Elon University Center for Environmental Studies and the Z. Smith Reynolds Foundation to fund a full-time position to coordinate conservation and trail efforts on the Upper Haw River. This newsletter, and our website: www.thehaw.org, are an effort to inform the public about the accomplishments and goals of these positions and the ongoing work stemming from the 2006 Memorandum of Understanding.

HRT PARTNERSHIP RECEIVES TRAIL AND CONSERVATION EASEMENTS AT CAROLINA MILL

In an agreement almost two years in the making, the City of Burlington, a Haw River Trail Partner, has finalized an agreement with Carolina Mill, LLC to extend the Haw River Trail and protect two acres of sensitive riparian buffer. The deal will give the City of Burlington a trail easement across nearly a mile of riverfront on the northern side of the Haw River between Highway 62 and Carolina Mill. The trail easement connects with the roughly 2.5 mile stretch of Haw River Trail between Indian Valley Paddle Access and Glencoe Paddle Access opened October 11th. The trail has already been marked and rough-cut by prisoners from the Dan River Prison Work Farm. Bridge construction and signage should be completed by the spring.

The City also acquired a conservation easement on approximately two acres of riverfront on the Haw River on the eastern side of Highway 62.



New Trail at Carolina Mill

CONTINUED AT "Carolina Mill" on Page 3

REI GIVES \$5,000 TO JUMP START HRT VOLUNTEERING VOLUNTEER MEETING SET FOR SATURDAY, NOV. 22

Over the past couple of years, many people have contacted us hoping to volunteer on the Haw River Trail. We finally listened. Thanks to a grant from REI, the Haw River Trail Partnership is forming two volunteer groups to build and patrol the Haw River Trail. The \$5,000 grant was awarded to the Elon University Center for Environmental Studies to start the groups. The first group will focus on cutting trail, building bridges and extending the Haw River Trail. The second group will patrol the land and paddle trails, ensuring the trails are clean and safe.



An organizational meeting will be held this Saturday at the Lodge House B&B in Glencoe from 4:00 to 5:30. Barbeque plates will be served to volunteers and information about the new groups will be discussed. If you would like to attend, please email Courtney Graham at cgraham2@elon.edu. To get to the Lodge House, take Hwy 62 north out of Burlington, turn left onto Glencoe Street just after the Haw River Bridge. Continue around the bend into the Glencoe Mill Village. The Lodge House is on the right at 2435 Glencoe Street.



www.thehaw.org

**Haw River
Trail Hiking
Staff
Medallions
Available**

We now have a limited supply of hiking staff medallions available for purchase. The medallions are popular among hikers as a memento of hiking trails conquered. Each medallion comes with two nails.

The medals are available for \$5 dollars at the Cedarock Park Visitors Center.

THE MOUTH OF THE HAW

Page 2

ALAMANCE COUNTY HIRING TRAIL SPECIALIST

Alamance County is now hiring a part-time Trail Specialist to work on the Haw River Trail. The position will be responsible for organizing and leading volunteers for the newly formed Haw River Trail Patrol Crew and the Haw River Trail Work Crew. The position will also be responsible for weekend patrols of trails and paddle accesses. This position requires interacting with the public and representing the Haw River Trail. The position will also be leading volunteers on trail work days.

Applicants should have a passion for outdoor recreation and conservation, be organized, self-motivated and possess good people skills. Applicants must also be in good physical condition, capable of trail building, hiking and canoe/kayak paddling. To apply, please contact Sherry Hook, Human Resources, County Offices, 124 W. Elm St., Graham, NC 27253, (336) 228-1312. For questions about the position, email info@thehaw.org or call Brian Baker at 229-2229.

HRT RECIEVES \$75,000 GRANT FOR PADDLE ACCESS AT GREENSBORO-CHAPEL HILL ROAD

Alamance County Recreation and Parks, a Haw River Trail Partner, has received a \$75,000 grant from the North Carolina State Trails Recreational Trails Program to construct a new paddle access on the Haw River. The new access will be built on Greensboro-Chapel Hill Road in the southeast corner of Alamance County. This access will be the southernmost access on the Haw River's 37 mile track through Alamance County. The access will serve as a connection between two popular sections of the river that have been previously reached through informal accesses. The new paddle access will allow the public to paddle the river through a safe, legal and controlled site. Plans for the site include a parking area, a canoe/kayak launch, educational signage and picnic areas.

2008 marks the second consecutive year the HRT Partnership has received an RTP grant. The 2007 grant is being used to construct the 15-acre Red Slide Park in the Town of Haw River. Previous RTP grants have also been used to construct Swepsonville River Park and to assist in trail development along the Haw River Trail from Indian Valley to Carolina Mill.



Bracket Fungus at future site of Greensboro-Chapel Hill Road Paddle Access.



GREAT BEND PARK AT GLENCOE, INDIAN VALLEY TRAIL OFFICIALLY OPEN

The newest section of the Haw River Trail opened in October with a grand opening ceremony at Great Bend Park at Glencoe. The new stretch of trail is almost two miles in length, stretching from Indian Valley Paddle Access to Highway 62. The trail winds through the City of Burlington's Indian Valley Golf Course and Alamance County's new Great Bend Park. In addition to hosting the Haw River Trail, Great Bend Park at Glencoe now protects approximately 30 acres of riverfront property in the historic Glencoe Mill Village. The park includes fishing, picnic areas and additional trails and was recently named as a site on the North Carolina Birding Trail.

The park's grand opening was attended by Rep. Alice Bordsen, who was instrumental in the acquisition of the park, as well as officials from Alamance County and the City of Burlington. To hike the newest section of trail, take Highway 62 north from Burlington. Immediately after crossing the Haw River, take a left into Glencoe Paddle Access, the western terminus of the trail. Parking is also available off Greenwood Drive and at Indian Valley Golf Course.

Great Bend Park will be operated by Alamance County Recreation and Parks and will protect almost a mile of river frontage. The new park offers access to a 5-acre island, numerous picnic areas and designated fishing areas. For paddlers coming from upstream, the park also secures portage around the Glencoe dam. The property was acquired with grants from the North Carolina Clean Water Management Trust Fund and the North Carolina Natural Heritage Trust Fund.

“Carolina Mill” CONTINUED

The conservation easement will protect approximately 500 feet of riverfront and the adjacent riparian buffer.

The City received the easements at no cost in exchange for transferring an option to purchase a 3.2 acre parcel owned by B&B of Burlington, Inc. The option was initially acquired with assistance from Piedmont Land Conservancy and the North Carolina Wildlife Habitat Foundation. The Haw River Trail Partnership is extremely thankful to those organizations for their willingness to contribute to this project. Carolina Mill, LLC is a subsidiary of Capital Broadcasting Company, Inc., the company that is responsible for redeveloping the American Tobacco Campus in Durham, home of the Durham Bulls baseball team. This project is a wonderful example of the Haw River Trail Partnership's Conservation Through Recreation mission. We look forward to opening this new section of trail to the public in the coming months.



Cutting the ribbon at Great Bend Park at Glencoe. (left to right) Asst. County Manager Tim Burgess; Alamance County Recreation and Parks Advisory Board Chairman Dale Page; Rep. Alice Bordsen; and Director of Burlington Recreation and Parks Department Tony Laws.

Want More Pictures?

To see more pictures of the Yee-Haw! River Paddle, or of life on the Haw River Trail, visit the Haw River Trail Group on Flickr.com.

Upload a few of your own while you are there.

Want To Help?

We welcome community involvement in our projects and can always use motivated volunteers. We currently need volunteers to assist:

- Picking up Litter on the Trail and in the River
- Manning Booths at Festivals and Events
- Organizing and Leading Volunteer Events
- Creating Newsletters and Promotional Materials
- Building Trails and Footbridges

To help, email us at getinvolved@thehaw.org



www.thehaw.org

Please Send Us Your Trip Reports

For visitors and first-time paddlers on the Haw River Paddle Trail, knowing what water levels are required for each section of the river can be difficult. To help, we are considering placing gauges near the accesses that display proper water levels. We need your help to determine what water levels to recommend.

Next time your on the Haw, take a quick minute to tell us what section you paddled, what the water level was (or when you paddled) and whether that level was acceptable.

Please email trip reports to info@thehaw.org or call 336/229-2229.

NEW STUDY CREDITS GREEN SPACE WITH REDUCING HEALTH GAP BETWEEN RICH AND POOR

A study published in the November 8 issue of the *Lancet* finds that health disparities between the rich and poor are much narrower in areas with ample green space. Reuters reported last week that researchers from the University of Glasgow in Scotland studied nearly 41 million people living in England below retirement age and the death records of more than 360,000 individuals to measure the association between exposure to green space, income and mortality between 2001 and 2005. They found that the gap in mortality between the high income and low income residents was about half as large in areas with ample green space as the gap in areas with the least green space. Suggesting that green space may reduce health disparities by enabling residents to become physically active and reduce stress, the researchers concluded that "environments that promote good health might be crucial in the fight to reduce health inequalities." An editorial accompanying the study, meanwhile, says the study "offers valuable evidence that green space does more than pretty up a neighborhood; it appears to have real effects on health inequality, of a kind that politicians and health authorities should take seriously." (Reuters, 11/6/08; Mitchell et al., *Lancet*, 11/8/08).

NEW ALAMANCE COUNTY PADDLE TRAIL MAP AVAILABLE

A new map detailing the Haw River Paddle Trail in Alamance County will soon be available. The map details the approximately 20 miles of river now open and the four new accesses created in the past two years. Look for the map on the Burlington/Alamance County Convention and Visitors Bureau's homepage at www.visitalamance.com. An interactive version will also be available at www.thehaw.org.



To remove your name from our mailing list, please [click here](#).

Questions or comments? E-mail us at info@thehaw.org or call 336/229-2229